

**OPERATOR : GRIMALDI COMPAGNIA DI NAVIGAZIONE S.P.A.**

**FLEET SERIAL NOS :**

**15M. - 100 ton General Cargo Rolltrailer ( 3M )**

ELGC 103001 7

ELGC 103002 2

ELGC 103003 8

ELGC 103004 3

ELGC 103005 9

ELGC 103006 4

ELGC 103007 0

ELGC 103008 5

ELGC 103009 0

ELGC 103010 4

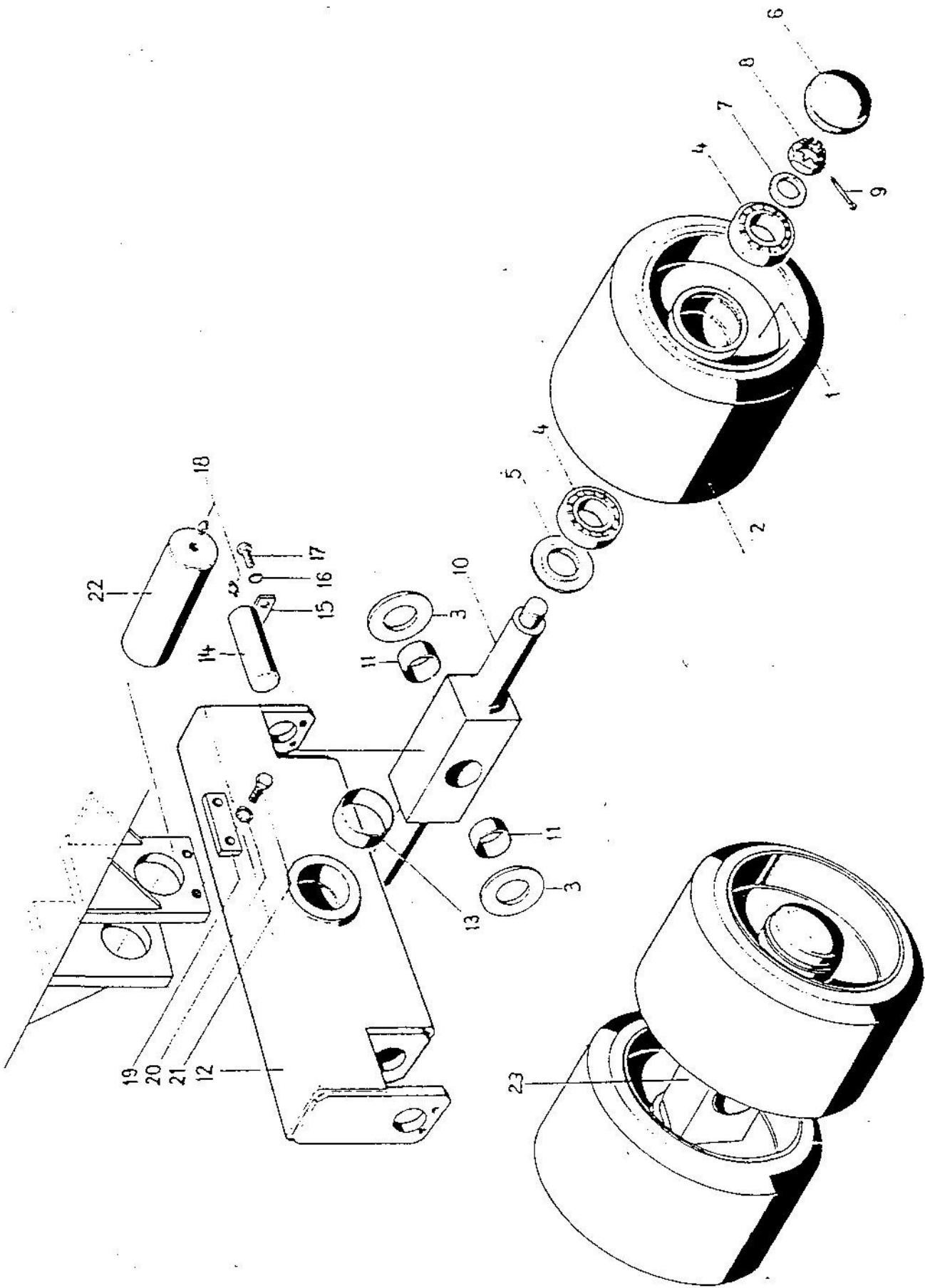
ELGC 103011 0

ELGC 103012 5

ELGC 103013 0

ELGC 103014 6

ELGC 103015 1



---

**SPARE PARTS SCHEDULE : TSC 30061A**

**RUNNING GEAR DRG NOS : 2.10.29.0016**

**RE : 15M. -100 ton Rolltrailer (3 meters)**

**ITEM DESCRIPTION**

- 1 Steel Wheel Rim (basic)
- 2 Steel banded 22" x 16" / 16" solid rubber tyre (559x405/405mm)
- 3 Steel Axle Spacer Washer (DIN 125)
- 4 Taper Roller Bearing
- 5 Oil Seal 90/40
- 6 Plastic Hub Cap
- 7 -
- 8 Castle Nut (M48)
- 9 Split Pin (Din 94)
- 10 Pendle Axle (basic)
- 11 Axle Bush 90/40 (2)
- 12 Rocker Beam (basic) 1460 mm centres
- 13 Rocker Bush 100/60 (2)
- 14 Mild Steel Axle Pin 90mm dia.
- 15 Keep Plate (axle pin)
- 16 Lock washer (axle keep plate)
- 17 Treaded Bolt M12 (axle keep plate)
- 18 Grease Nipple
- 19 Keep Plate (rocker pin)
- 20 Lock Washer (rocker keep plate)
- 21 Threaded Bolt M16 (rocker keep plate)
- 22 Mild Steel Rocker Pin 100 mm dia.
- 23 Complete Pendle Wheel & Axle Assembly (1040mm overall length)  
With press-on 22" x 16" / 16" steel banded  
Solid Rubber single tyres (559x405/405mm)

---

## **TORQUE MAINTENANCE SCHEDULE :**

### **A. Inspection + Torque Schedule :**

- Immediately within the first initial 24 hours operational service
- At the end of the first week of operation service
- Thereafter, at least every month as part of a standard monthly inspection routine

### **B. Wheel Set ( castle nut M48) :**

Should be checked every month to ensure that the torque is correct and that the retaining split pin is firmly in position.

If necessary, tighten up to a maximum torque of 900 Nm.

### **C. Keep Plate Bolts ( M12 & M16 )**

The 4 rocker pin keep plate bolts and 8 axle keep plate bolts should be both visually and manually checked and if necessary torqued up to :

Max. 40 Nm M12 (8.8) axle keep plate bolts

Max. 100 Nm M18 (8.8) rocker keep plate bolts

**Inspection and torque schedule as detailed under “ A “**

---

## **SERVICE MANUAL**

### **15M – 100 ton General Cargo Rolltrailer (3 meters)**

#### **GENERAL :**

The following general checks and maintenance procedures should be carried out on a regular basis to ensure safe and trouble free operations.

#### **TYRES + WHEELS :**

The steel banded solid rubber tyres are pressed onto the fully welded steel rims. A minimum monthly visual inspection for tyre damage is recommended.

#### **LUBRICATION :**

There are a total of 14 lubrication points in the running gear assembly

- One at the end of the each mild steel (C35) axle pivot pin (total 4)
- One at the end of each mild steel (C35) rocker pivot pin (total 2)
- One in each of the steel wheel rim. (total 8)

Regular lubrication of all 14 lube points at the end of the first month's operation thereafter, at least every 6 months. Make sure that all the plastic hubcaps are intact and firmly in position.

Use multi-purpose bearing grease (e.g. SKF GEM2 or LGEV2 )

---

**Technical Data****TSC 30061A**

---

**15m - 100 ton General Cargo Rolltrailer (3M)**

<b>Max. Payload</b>	<b>100.000 kgs</b>
Platform Size L x W	15,000 x 3,000 mm.
Platform Height	820 mm / 870 mm (front / over running gear)
Decking	60 mm. pine wood impregnated
Solid Rubber Tyre Size	22" x 16" /16" (559 x405/405 mm) steel banded
<b>Accessories</b>	Unladen Forklift Pockets (2050 mm centres) Safety Hooks (at the coupling tunnel) 22 x Lashings Bars (2 + 9 + 9 + 2) 12 x Stanchion Pockets (2 + 4 + 4 + 2) Steel "Stacking" Plates over running gear
<b>Load Distribution</b>	
King Pin Load	max. 35 tons
1 <sup>st</sup> Axle Line	max. 18.8 tons x 2
2 <sup>nd</sup> Axle Line	max. 18.8 tons x 2
Tare Weight	approx. 10,800 kgs

**OPERATOR : GRIMALDI COMPAGNIA DI NAVIGAZIONE S.P.A.**

**EC-Homologation Declaration (CCE)  
conforming to EC directive on machines 89/392/EEC, Annex IIA**

Type of Machine : 15 metres /100 tonnes capacity Rolltrailer (3 metres)

Order No. : 91543/00620423/0121981 (San Paolo Leasint S.P.A.)

Developed, designed and manufactured according to :

EC Directives for Machinery (89/392 EWG)

The following national homologation standards, directives and specifications have been applied:-

DIN EN 287-1 (re welding and weld preparation of steelwork)

DIN EN 292 (safety of machines, general rules and general design regulations)

Date : 31<sup>st</sup> December 2001