



**ZPRE**  
JEDLICZE

**ZPRE „JEDLICZE” Sp. z o.o.**  
ul. Kurkowskiego 86, 38-460 Jedlicze  
tel. (13) 43 75 300, fax: (13) 43 75 304  
<http://www.zpre-jedlicze.com.pl>,  
e-mail: [zpre@zpre-jedlicze.com.pl](mailto:zpre@zpre-jedlicze.com.pl)

## **Instructions for use**

### **Rolltrailer PT/100-40‘**

**Type:** PT 100 - 40‘ 12,350 x 2,50 x 0,70/0,73 m

**Year of production:** 2021

**Customer:** Grimaldi Euromed S.p.A.

**Manufacturer:** ZPRE Jedlicze Sp. z o.o.  
ul. Kurkowskiego 86,  
38-460 Jedlicze  
tel.: +48 13 43 75 305  
fax: +48 13 43 75 304



**ZPRE**  
JEDLICZE

**ZPRE „JEDLICZE” Sp. z o.o.**  
ul. Kurkowskiego 86, 38-460 Jedlicze  
tel. (13) 43 75 300, fax: (13) 43 75 304  
<http://www.zpre-jedlicze.com.pl>,  
e-mail: zpre@zpre-jedlicze.com.pl

## **READ BEFORE USING**

### **Introductory Information**

- Read the following instructions.
- Maintenance and operating according to instruction.
- Operating and maintaining according to the instructions from information.
- Familiarize each user with the content of the instruction

### **Durability**

Any damage should be removed by qualified personnel. Use the highest quality components for maintenance.

### **Intendet Use**

The Rolltrailer is designed to transport heavy loads in confined areas. The Rolltrailer cannot be used on public roads.

### **Warranty**

The guarantee is provided according to individual arrangements with the client. The condition for breaching the warranty may be:

- Failure to follow the instructions,
- Overload the rolltrailer,
- Using the rolltrailer for any other purpose than its intended use,
- Carrying out any alterations on the rolltrailer without prior permission of ZPRE JEDLICZE,
- Not carrying out the necessary tests and maintenance works out on schedule.

### **Contact details**

**ZPRE "JEDLICZE" Sp. z o.o.**  
**ul. Kurkowskiego 86,**  
**38-460 Jedalicze**  
**tel.: +48 13 43 75 305**  
**fax: +48 13 43 75 304**

### **General information**

- Make sure that the rolltrailer is operated, maintained and re- paired only by authorized and sufficiently trained and qualified personnel.
- Check the rolltrailer for any defects or faults before and while us- ing it.
- Stop the operation instantly when you notice defects or faults

### **Loading**

- Never exceed the maximum capacity of the rolltrailer indicated on the data plate.
- Make sure that the cargo is distributed over the load area.
- Avoid concentrated loads on the load area.
- Fix the load on the rolltrailer securely. It shall be prevented from slipping or falling down.
- It is not recommended to load cargo with dimensions larger than the platform.



**ZPRE**  
JEDLICZE

**ZPRE „JEDLICZE” Sp. z o.o.**  
ul. Kurkowskiego 86, 38-460 Jedlicze  
tel. (13) 43 75 300, fax: (13) 43 75 304  
<http://www.zpre-jedlicze.com.pl>,  
e-mail: [zpre@zpre-jedlicze.com.pl](mailto:zpre@zpre-jedlicze.com.pl)

### **Operating**

- Make sure that the towing vehicle has an appropriate capacity.
- Never exceed the maximum speed indicated in these instructions for use.
- Never operate the rolltrailer with people sitting or standing on the rolltrailer.
- Make sure that at no time people stand or walk the work area.
- The rolltrailer shall be operated only on even and solid ground.
- The speed shall be adapted to the traffic, surface and weather conditions.
- Do not exceed the recommended maximum speed
- Be very careful when driving on ramps. Reduce speed in curves.
- Make sure that nobody is standing or walking in the danger area of the rolltrailer while it is in operation or during the process of coupling or uncoupling.

### **Parking**

- Park in a designated place
- Prevent rolltrailer from rolling when it is parked.

### **Maintenance works**

- Make sure that the rolltrailer is in a safe parking position and prevented from rolling before carrying out maintenance works on the rolltrailer.
- Repair and maintenance works must only be carried out by trained and qualified specialists.



## Specifications

<b>Weights and loads</b>		
Capacity	100.000 kg	
Tare weight	8.400 kg	
Axle load rear	Up to 4 x 22.000 kg	
5th wheel load (with gooseneck)	Up to 36.000 kg	
<b>Dimensions</b>		
Platform length	12.350 mm	
Platform width	2.00 mm	
Platform height	700 / 750 mm	front / rear
Platform cover	5/7 mm	tear plate
Rear overhang		
<b>Running gear</b>		
Number of axle lines	2	
Number of wheels	8	
Tyre size	22x16x16	Solidal
<b>Speed</b>		
Speed max.	6 km/h	with load
	16 km/h	without load
<b>Accessories</b>		
Hook-type coupling at front		With eyelets for safetychains
D-rings	30 (6+10+10+4)	
Lashing	4 (2+2)	In the rear
Forklift pockets		
<b>Paint finish</b>		
2-layer coating	RAL 3011 (brown red)	
	RAL 1018 (zink yellow)	Around forklift pockets

\*Deviations in weights and dimensions reserved.

## **Operating instructions**

### **Application**

- The roll trailer shall only be used for internal transports in accordance with its intended use.
- The transport of persons is not allowed.
- During operation the operator has to observe whether any defects or faults occur.
- Every day before the start of operation the operator of the towing vehicle has to check the rolltrailer for visible defects.

### **Loading**

- Make sure that the rolltrailer is parked on horizontal ground.
- The weight of the cargo put on the rolltrailer shall not exceed the maximum capacity.
- The cargo that is to be transported must be fixed and secured adequately.
- Always make sure to prevent the cargo from falling and sliding off the rolltrailer
- To avoid overloading always ensure that the centre of gravity of the load is within the area, marked in the load diagram.
- When point loads are applied to the platform, make sure that each load is supported by the trailer's longitudinal beams, e.g. use some support cross beam

### **Distributed load**

To avoid overloading, always ensure that the centre of gravity of the load is within the respective areas in the diagram (see the diagram for distributed load on page 6).

### **Point load**

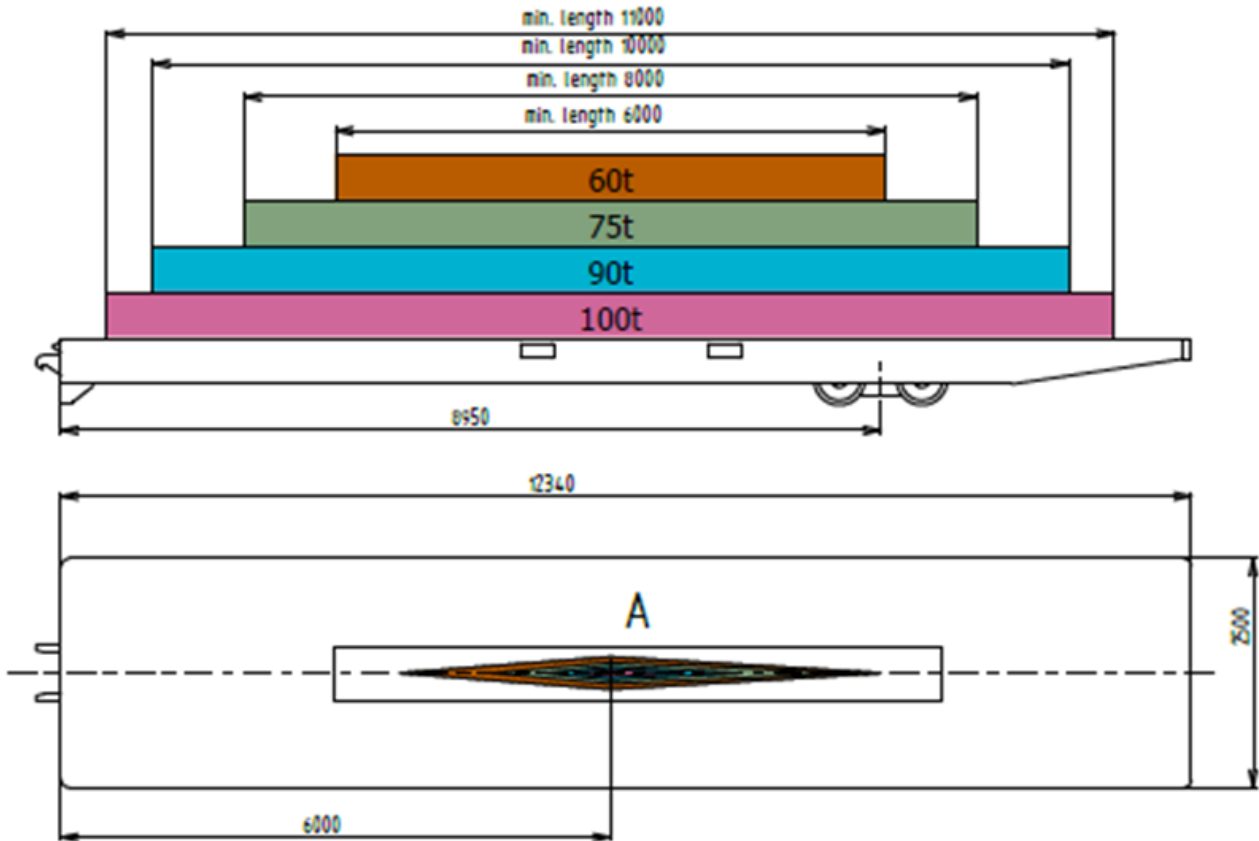
For loading point loads, see the diagram for point loads on page 7.

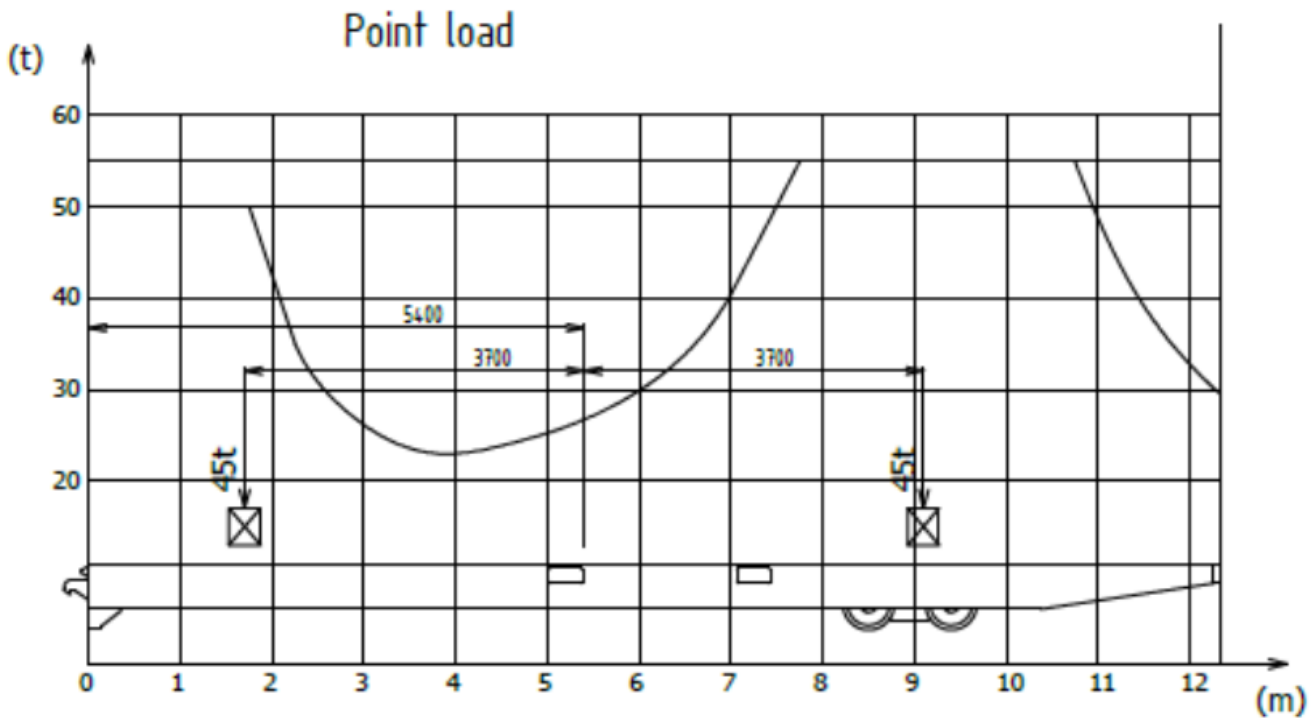


**ZPRE**  
JEDLICZE

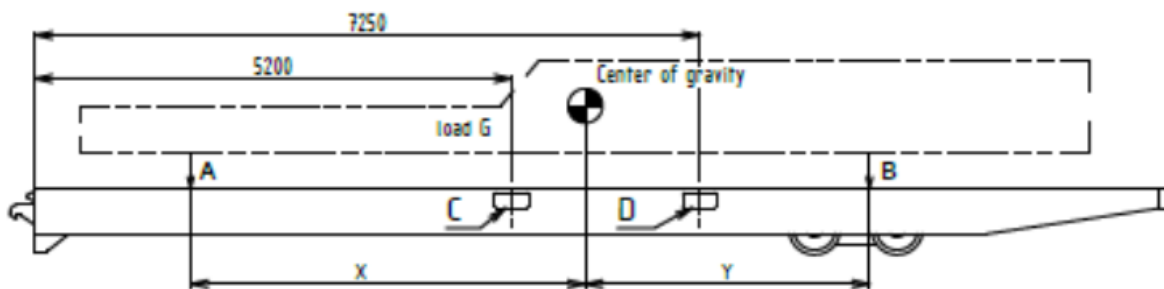
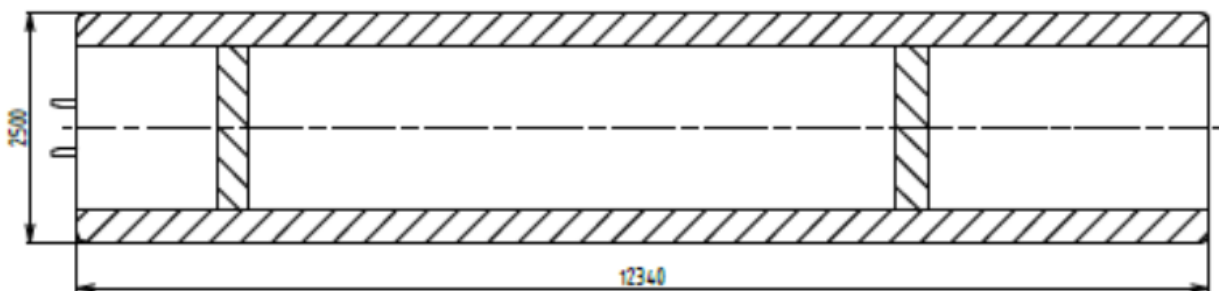
**ZPRE „JEDLICZE” Sp. z o.o.**  
ul. Kurkowskiego 86, 38-460 Jedlicze  
tel. (13) 43 75 300, fax: (13) 43 75 304  
<http://www.zpre-jedlicze.com.pl>,  
e-mail: zpre@zpre-jedlicze.com.pl

## Distributed load





Point loads on the platform to be placed or transferred using transversal supports to the longitudinal beams



Loading instruction

$$B = \frac{G \cdot X}{X + Y} \quad A = G - B$$



- 1) Identify loads center of gravity
- 2) Calculate the loads, coming to the Rolltrailer platform acc to above scheme
- 3) Make sure, load center of gravity is in the determined area
- 4) Loads A and B shall not exceed the limit line in above diagram
- 5) Loads A and B must not reach places C and D (holes in the beam)



### **Coupling the to the gooseneck**

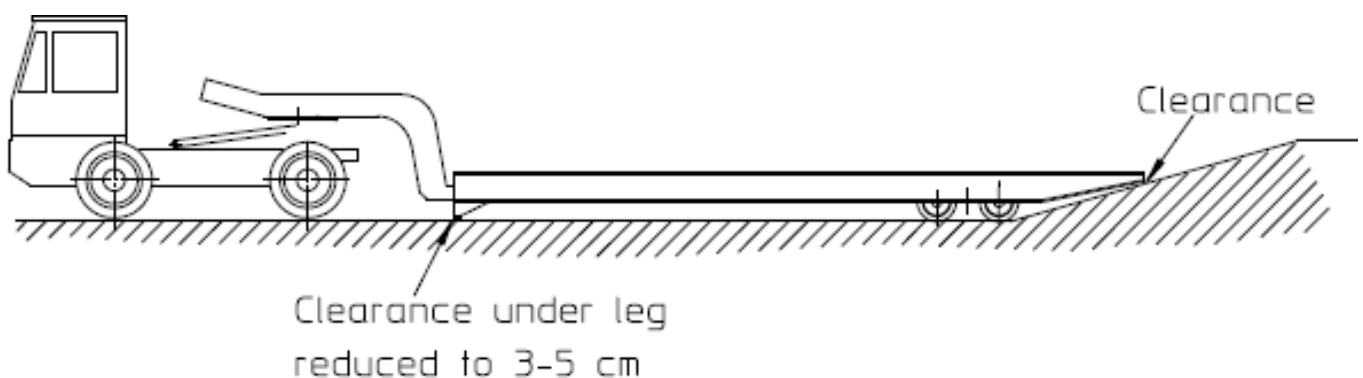
- Drive backwards with the towing vehicle and the gooseneck.
- Place the toe of the gooseneck exactly into the mouth of the rolltrailer.
- Lift the gooseneck with engaged reverse gear and unbraked towing vehicle
- Make sure that the gooseneck is hooked into the rolltrailer correctly and the safety chains are connected to the rolltrailer properly (if applicable).
- Lift the rolltrailer via the lifting hydraulics of the towing vehicle until the front wall of the rolltrailer is approximately 100 – 150 mm over the ground.

### **Driving the towing vehicle with rolltrailer**

- The rolltrailer shall only be towed by an appropriate towing vehicle with a lifting capacity of at least 39 t and a lifting height of at least 750 mm in combination with an adequate gooseneck.
- The roads shall be even, horizontal and free from obstacles.
- The permitted speed and the current safety regulations shall in any case be complied with.
- The maximum speed under load is 6 km/h.
- In curves the speed has to be reduced.
- When reversing and the rear view is insufficient or obstructed, the driver has to be supported by another person, indicating the direction.

### **Driving over ramps**

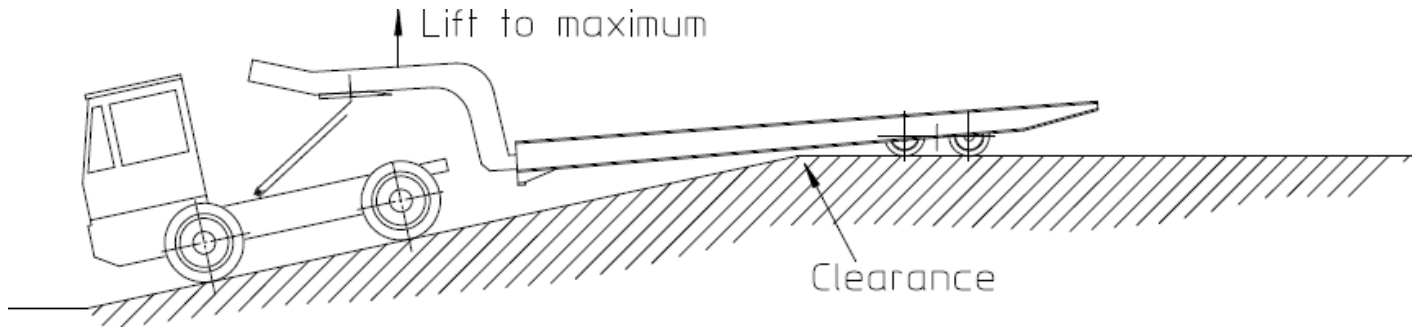
- When reversing towards an upgoing ramp operator must lower the fifth wheel to maintain a ground clearance under the trailer front leg of 3-5 cm in order to achieve a maximum clearance rear.







- When the trailer wheels have passed the upper end of the ramp, operator must lift the fifth wheel to maximum height to achieve a sufficient ground clearance under longitudinal beams of the trailer.



## Maintenance instructions

### General information

- The tests and maintenance works have to be carried out at regular intervals to ensure that your rolltrailer is working reliably and securely.
- Defective parts have to be exchanged instantly. As spare parts you should use only best quality components, which fulfil the specified requirements and correspond to the national safety regulations.

### First inspection

Wheel bearings have to be checked and if necessary readjusted after the first 10 - 20 operating hours.

### Adjusting wheel bearings

- Make sure that the rolltrailer is in parking position.
- Lift the rear side of trailer so that the wheels can be rotated by hand.
- Put suitable supports under the lifted trailer.
- Check wheels: In case there is axial movement or the rotation is not smooth,
  - ✓ remove the hub cap (warm the cap up to app. 60°C).
  - ✓ remove the split pin from the horned nut.
  - ✓ tighten the horned nut until the wheel is blocked.
  - ✓ untighten the horned nut until the wheel rotates freely but so that there isn't any axial movement.
  - ✓ refit the split pin.
  - ✓ refit the hub cap (warm the cap up to app. 60°C).
- Make sure that you did not forget to refit any parts.
- Lower rear side of trailer.



**ZPRE**  
JEDLICZE

**ZPRE „JEDLICZE” Sp. z o.o.**  
ul. Kurkowskiego 86, 38-460 Jedlicze  
tel. (13) 43 75 300, fax: (13) 43 75 304  
<http://www.zpre-jedlicze.com.pl>,  
e-mail: [zpre@zpre-jedlicze.com.pl](mailto:zpre@zpre-jedlicze.com.pl)

## **Running gear**

Carry out visual inspections of the running gears as per maintenance schedule:

- Check oscillation of the pendular axles and inspect pivot pins (bolts) and axlesecuring plates. Retighten (if necessary) axle guard screws.
- In case oscillation of axles is not smooth, demount pivot pin and check if thereis insufficient grease or axle bushings are worn. Replace worn bushings.
- Check oscillation of the rocker beams and in case of not smooth movement,take actions as described above for the axles.
- Make visual inspection of axles and rocker beams. In case of cracks or damag-es report to the manufacturer and ask for repair instructions.

## **Tyres**

Carry out visual inspections of the tyres as per maintenance schedule.

- Check rubber for cracks, damages or foreign material, sticking in the rubber.
- Check correct position of tyres on the rims.

In case of severe rubber damages or if the tyre sits incorrectly on the rim, replace tyreagainst a new one.

## **Wheels**

Inspect wheels as per maintenance schedule:

- Check how the wheel is rotating.
- Check the sound. If the wheel is making any abnormal sounds, demount thewheel and check the roller bearing. Replace it if necessary.
- Check the axial movement of the wheel. If you notice any axial movement read-just the roller bearings (see above “How to readjust wheel bearings”)

In case of heavy or frequently use, please shorten the interval of inspection.

## **Frame**

Carry out visual inspections of the frame and the welding joints as per maintenance schedule. The frame is made of structural steel. In case of damage it can be repairedby qualified staff. For questions, please contact the manufacturer.

## **Axles and rocker beams bolts**

Inspect the bolts on the axles and rocker beams frequently. Check the securing (lock-ing) plates for damages and adequate tightness.

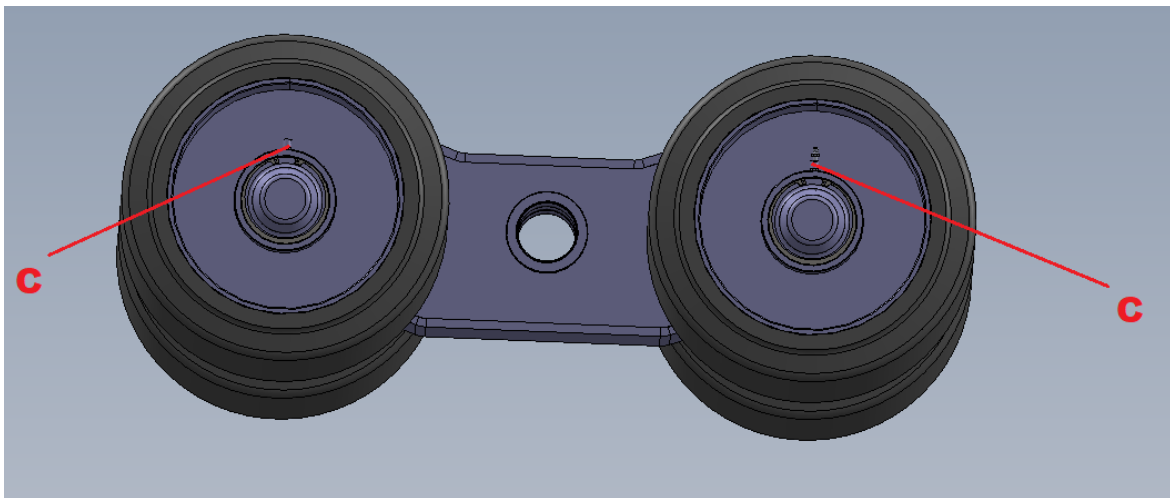
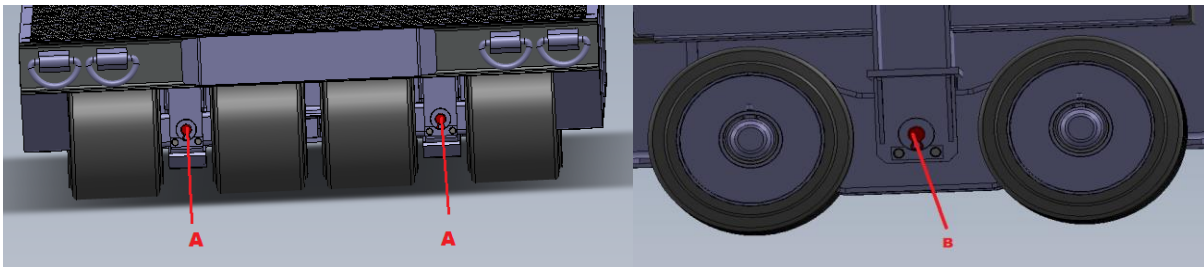


### Lubrication schedule

Greasing point		Number	Greasing interval
A	Axle bearings	4	1 month
B	Rocker beam	2	1 month
C	Wheel bearings	8	6 months

N.B.: The intervals at which greasing is necessary depend on the operating conditions of the rolltrailer. In case of heavy use, please shorten the greasing intervals.

Standard multi purpose grease: Viscosity class NLGI 2.



### Maintenance schedule

Scope of work	Weekly	Monthly	Every 6 months	Yearly
Visual inspection	X			
Running gear			X	
Tyres		X		
Wheels			X	
Frame				X
Bolts		X		

\* Recommended by the manufacturer



**ZPRE**  
JEDLICZE

**ZPRE „JEDLICZE” Sp. z o.o.**  
ul. Kurkowskiego 86, 38-460 Jedlicze  
tel. (13) 43 75 300, fax: (13) 43 75 304  
<http://www.zpre-jedlicze.com.pl>,  
e-mail: zpre@zpre-jedlicze.com.pl

### Tightening torque for screws and nuts

All screws and nuts have to be checked and tightened respectively once a month.

Friction value:  $\mu_{tot.} = 0,12$  for screws and nuts without after-treatment as well as phosphated screws.

### Metric standard threads (ISO) DIN 13, sheet 13

Dimension	8.8		10.9		12.9
M4	2,8		4,1		4,8
M5	5,5		8,1		9,5
M6	9,5		14		16,5
M7	15		23		28
M8	23		34		40
M10	46		68		79
M12	79		115		135
M14	125		185		215
M16	195		280		330
M18	280		390		460
M20	390		560		650
M22	530		750		880
M24	670		960		1100
M27	1000		1400		1650
M30	1350		1900		2250
M33	1850		2600		3000
M36	2350		3300		3900
M39	3000		4300		5100



**ZPRE**  
JEDLICZE

**ZPRE „JEDLICZE” Sp. z o.o.**  
ul. Kurkowskiego 86, 38-460 Jedlicze  
tel. (13) 43 75 300, fax: (13) 43 75 304  
<http://www.zpre-jedlicze.com.pl>,  
e-mail: zpre@zpre-jedlicze.com.pl

## Maintenance Records

Serial number: \_\_\_\_\_

Date of commissioning: \_\_\_\_\_

Date of first inspection: \_\_\_\_\_

Carried out by: \_\_\_\_\_

### Periodic inspections / maintenance works

Date	Result	Defects remedied on by		Signature



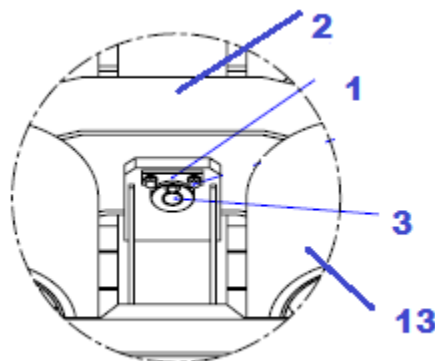
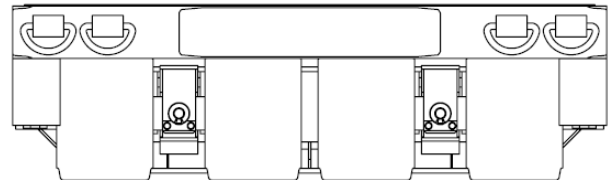
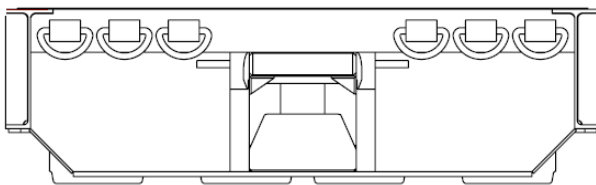
**ZPRE**  
JEDLICZE

**ZPRE „JEDLICZE” Sp. z o.o.**  
ul. Kurkowskiego 86, 38-460 Jedlicze  
tel. (13) 43 75 300, fax: (13) 43 75 304  
<http://www.zpre-jedlicze.com.pl>,  
e-mail: zpre@zpre-jedlicze.com.pl

## SPARE PARTS

### GENERAL VIEW

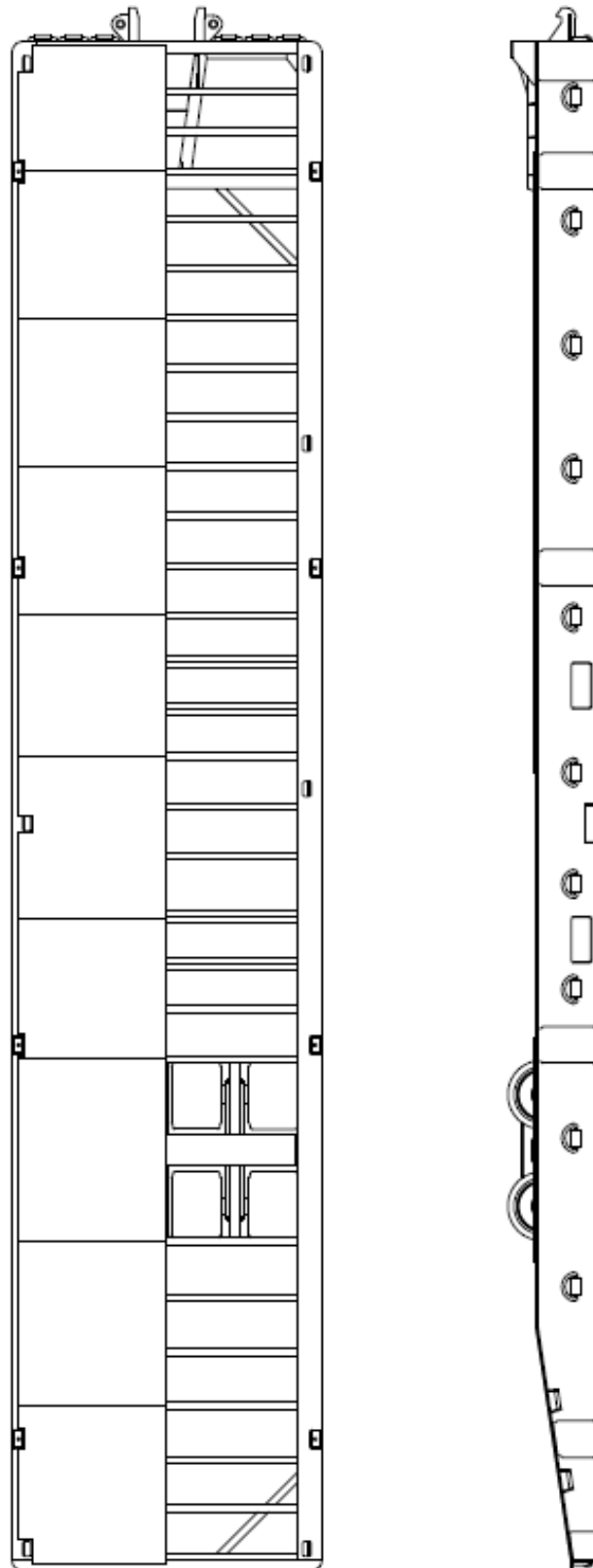
Number of spare part list		80288
Item	Description	Part no
1	Platform cover, tear plate 5/7 mm	XW550.02.00-3
39	D-ring	XW550.01.00-39
40	Lashing	XW550.01.01.00-7
13	Wheel set 22x16x16	XW550.02.00-13
2	Rocker beam L=1091	XW550.00-2
3	Bolt for rocker beam	XW550.00-3
4	Axle securing plate 40x10 DIN15058	XW550.02.00-4
6	Hexagonal screw M16x35 kl 8.8 DIN933	XW550.02.00-6
7	Lock washer A17 DIN125	XW550.02.00-7
9	Lubrication nipple M8x1 DIN71412	XW550.02.00-9





**ZPRE**  
JEDLICZE

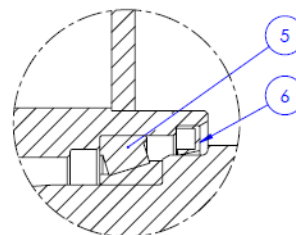
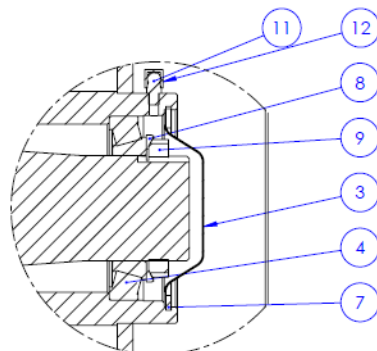
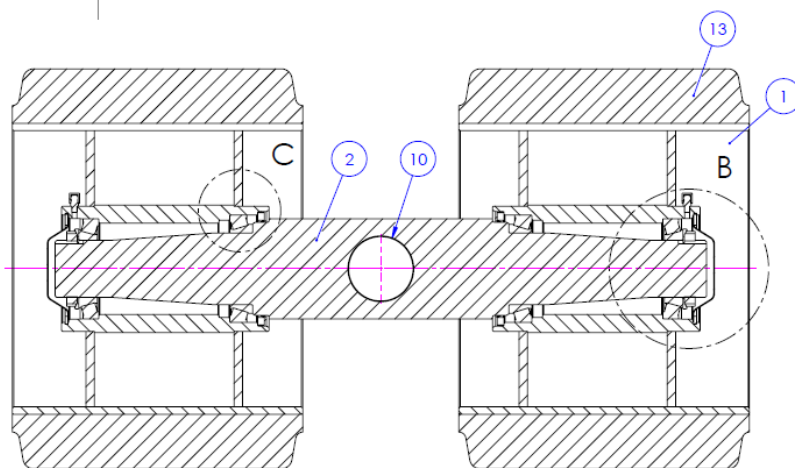
**ZPRE „JEDLICZE” Sp. z o.o.**  
ul. Kurkowskiego 86, 38-460 Jedlicze  
tel. (13) 43 75 300, fax: (13) 43 75 304  
<http://www.zpre-jedlicze.com.pl>,  
e-mail: [zpre@zpre-jedlicze.com.pl](mailto:zpre@zpre-jedlicze.com.pl)





WHEEL SET 22x16x16

Dwg. No.		80288-42
Item	Description	Part. No / Type
2	Axle	XW550.03.00-2
1	Wheel body	XW550.03.00-1
12	Hole plug	XW550.03.00-12
11	Lubrication nipple M8x1 DIN71412	XW550.03.00-11
3	Hub cap	XW550.03.00-3
5	Taper roller bearing 32022	XW550.03.00-5
10	Bushing 95x90-60	XW550.03.00-10
9	Castle nut KM16 M80X2	XW550.03.00-9
8	Bearing washer MB16-D80	XW550.03.00-8
7	Ring seger 150x4	XW550.03.00-7
6	Sealing ring	XW550.03.00-6
4	Tapered roller bearing 30216	XW550.03.00-4





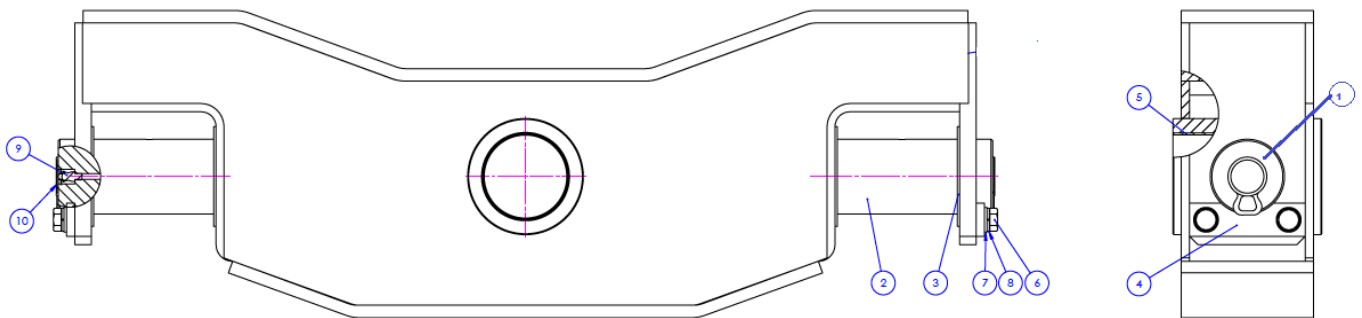


**ZPRE**  
JEDLICZE

**ZPRE „JEDLICZE” Sp. z o.o.**  
ul. Kurkowskiego 86, 38-460 Jedlicze  
tel. (13) 43 75 300, fax: (13) 43 75 304  
<http://www.zpre-jedlicze.com.pl>,  
e-mail: zpre@zpre-jedlicze.com.pl

## ROCKER BEAM

Dwg. No.		80288-43
Item	Description	Part. No
1	Bolt for rocker beam d=110	XW550.02.00-1
2	Bolt for wheel set d=90	XW550.02.00-2
5	Bushing 95x90x60	XW550.02.00-5
3	Washer d=120	XW550.02.00-3
4	Axle securing plate 40x10 DIN15058	XW550.02.00-4
6	Hexagonal screw M16x35 kl 8.8 DIN933	XW550.02.00-6
7	Lock washer A17 DIN125	XW550.02.00-7
8	Lock washer A16 DIN128	XW550.02.00-8
9	Lubrication nipple M8x1 DIN71412	XW550.02.00-9
10	Hole plug	XW550.02.00-10





**ZPRE**  
JEDLICZE

**ZPRE „JEDLICZE” Sp. z o.o.**  
ul. Kurkowskiego 86, 38-460 Jedlicze  
tel. (13) 43 75 300, fax: (13) 43 75 304  
<http://www.zpre-jedlicze.com.pl>,  
e-mail: zpre@zpre-jedlicze.com.pl

## LASHING EQUIPMENT

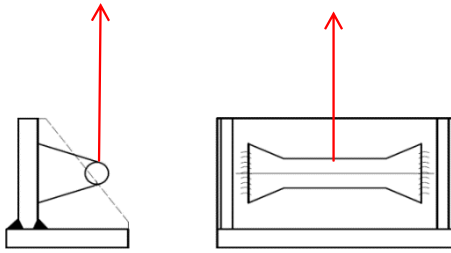
**MBL: Minimum Braking Load**

**In case of deformation : The lashing, D-Ring or lashing rail has to be replaced!**

### Lashing

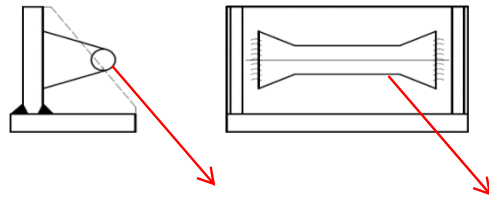
MBL = 280 kN

Pulling straight up



MBL = 300 kN

Pulling down at an angle





**ZPRE**  
JEDLICZE

**ZPRE „JEDLICZE” Sp. z o.o.**  
ul. Kurkowskiego 86, 38-460 Jedlicze  
tel. (13) 43 75 300, fax: (13) 43 75 304  
<http://www.zpre-jedlicze.com.pl>,  
e-mail: zpre@zpre-jedlicze.com.pl

### D-Ring

MBL	=	500 kN
Proof load	=	313 kN
SWL	=	250 kN

