

I N S T R U C T I O N S

F O R U S E

- Original -

Vehicle type: Rolltrailer 40' 130 t
12,285 x 2,70 x 0,67/0,72 m

Serial number: 80288 / 1-150

Year of manufacture: 2018

Customer: Grimaldi

Manufacturer: Seacom AG
Querstrasse 5
CH - 8212 Neuhausen

Tel. ++41 (0) 52 632 04 00

Fax ++41 (0) 52 632 04 09

Table of Contents

1.	General Information.....	Page 4
2.	Safety Instructions.....	Page 6
3.	Specifications.....	Page 8
4.	Operating Instructions.....	Page 9
5.	Maintenance Instructions.....	Page 14
6.	Spare Parts.....	Page 19
7.	Additional Information: Lashing Equipment ...	Page 23

1 GENERAL INFORMATION



Please carefully read these instructions for use before taking the rolltrailer into operation!

Observe the safety instructions!

Keep these instructions for use for future reference!

1.1 Introduction

Read the following operating and maintenance instructions carefully before taking the rolltrailer into operation.

These instructions must be available to every person, operating the rolltrailer or carrying out maintenance or repair works on the rolltrailer.

The rolltrailer shall only be employed, operated and maintained according to the information given in these instructions for use.

1.2 Durability

SEACOM rolltrailers are robust and require only little maintenance. Please make sure that any damage is instantly remedied by qualified specialists in order to avoid failure of the rolltrailer.

To ensure that the rolltrailer can be operated safely, use only OEM-quality components.

1.3 Intended Use

SEACOM rolltrailers are vehicles to transport cargo on companies' premises, NOT on public roads. To use the rolltrailer for any other purpose is beyond the intended scope of application and can result in damage to people or to the rolltrailer.

1.4 Warranty

Failure to comply with these instructions for use shall invalidate the warranty.

This is particularly true for any damage caused by the following actions:

- If you use the rolltrailer for any other purpose than its intended use.
- If you overload the rolltrailer.
- If you or a third party carry out any alterations on the rolltrailer without prior permission of SEACOM AG.
- If you fail to carry out the necessary tests and maintenance works or if you do not carry them out on schedule.

1.5 Contact details

Seacom AG
Querstrasse 5
CH - 8212 Neuhausen

Telefon ++41 (0) 52 632 04 00

Telefax ++41 (0) 52 632 04 09

Email: info@seacom.ch

2 SAFETY INSTRUCTIONS

2.1 General information

Always adhere to the current national safety regulations of the country in which the rolltrailer is operated.



Make sure that the rolltrailer is operated, maintained and repaired only by authorized and sufficiently trained and qualified personnel.

Check the rolltrailer for any defects or faults before and while using it.

Stop the operation instantly when you notice defects or faults.

2.2 Loading the rolltrailer

Never exceed the maximum capacity of the rolltrailer indicated on the data plate!



Make sure that the cargo is as evenly distributed over the load area as possible.

Avoid concentrated loads on the load area, especially when the cargo is heavy.

Fix the load on the rolltrailer securely. It shall be prevented from slipping or falling down.

It is not recommended to load cargo with dimensions larger than the platform.

2.3 Operating the rolltrailer

Make sure that the towing vehicle has an appropriate capacity.



Never exceed the maximum speed indicated in these instructions for use.

Never operate the rolltrailer with people sitting or standing on the rolltrailer.

Make sure that at no time people stand or walk underneath the gooseneck.

The rolltrailer shall be operated only on even and solid ground.

The speed shall be adapted to the traffic, surface and weather conditions.

Be very careful when driving on ramps.



Reduce speed in curves.

Make sure that nobody is standing or walking in the danger area of the rolltrailer while it is in operation or during the process of coupling or uncoupling.

2.4 Parking the rolltrailer

Always prevent the rolltrailer from rolling when it is parked.



2.5 Maintenance works on the rolltrailer



Make sure that the rolltrailer is in a safe parking position and prevented from rolling before carrying out maintenance works on the rolltrailer.

Repair and maintenance works must only be carried out by trained and qualified specialists.

3 SPECIFICATIONS

Weights and loads		
Capacity	130.000 kg	
Tare weight	12.200 kg	
Axle load rear	Up to 4 x 28.000 kg	
5th wheel load (with gooseneck)	Up to 39.000 kg	
Max. safe-neck load	32.000 kg	
Dimensions		
Platform length	12.285 mm	
Platform width	2.700 mm	
Platform height	670 / 720 mm	front / rear
Platform cover	5/7 mm	tear plate
Rear overhang	3.400 mm	
Running gear		
Number of axle lines	2	
Number of wheels	8	
Tyre size	620/420 – 480	solid rubber
Speed		
Speed max.	6 km/h	with load
	16 km/h	without load
Accessories		
Hook-type coupling at front		With eyelets for safety chains
D-rings	30 (6+10+10+4)	
Lashing	4 (2+2)	In the rear
Forklift pockets		
Paint finish		
2-layer coating	RAL 3011 (brown red)	
	RAL 1018 (zink yellow)	Around forklift pockets

Deviations in weights and dimensions reserved.

4 OPERATING INSTRUCTIONS

4.1 Application

- The roll trailer shall only be used for internal transports in accordance with its intended use.
- The transport of persons is not allowed.
- Every day before the start of operation the driver of the towing vehicle has to check the rolltrailer for visible defects.
- During operation the driver has to observe whether any defects or faults occur.

4.2 Loading the rolltrailer

- Make sure that the rolltrailer is parked on horizontal ground.
- The weight of the cargo put on the rolltrailer shall not exceed the maximum capacity.
- The cargo that is to be transported shall be fixed and secured adequately.
- Always make sure to prevent the cargo from falling off the rolltrailer and from sliding.
- To avoid overloading always ensure that the centre of gravity of the load is within the area, marked in the load diagram.
- When point loads are applied to the platform, make sure that each load is supported by the trailer's longitudinal beams, e.g. use some support cross beams.

Note: The load's centre of gravity COG should be at 6,2 m from the trailer's front edge.

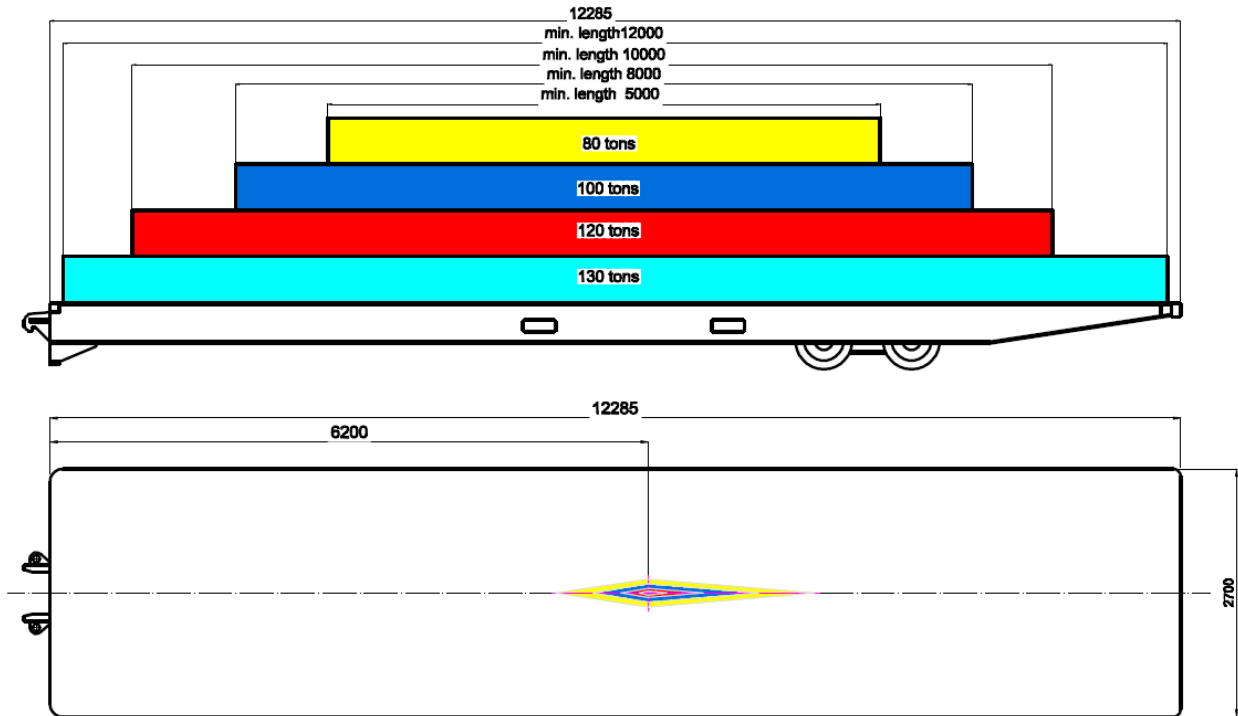
Distributed load

To avoid overloading, always ensure that the centre of gravity of the load is within the respective areas in the diagram (see the diagram for distributed load on page 10).

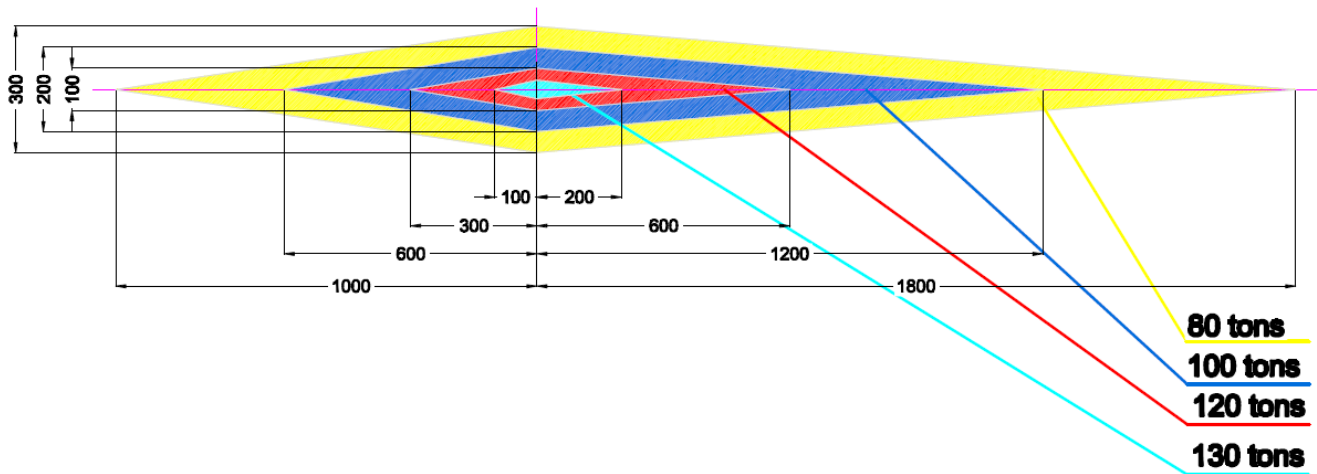
Point load

For loading point loads, see the diagram for point loads on page 11.

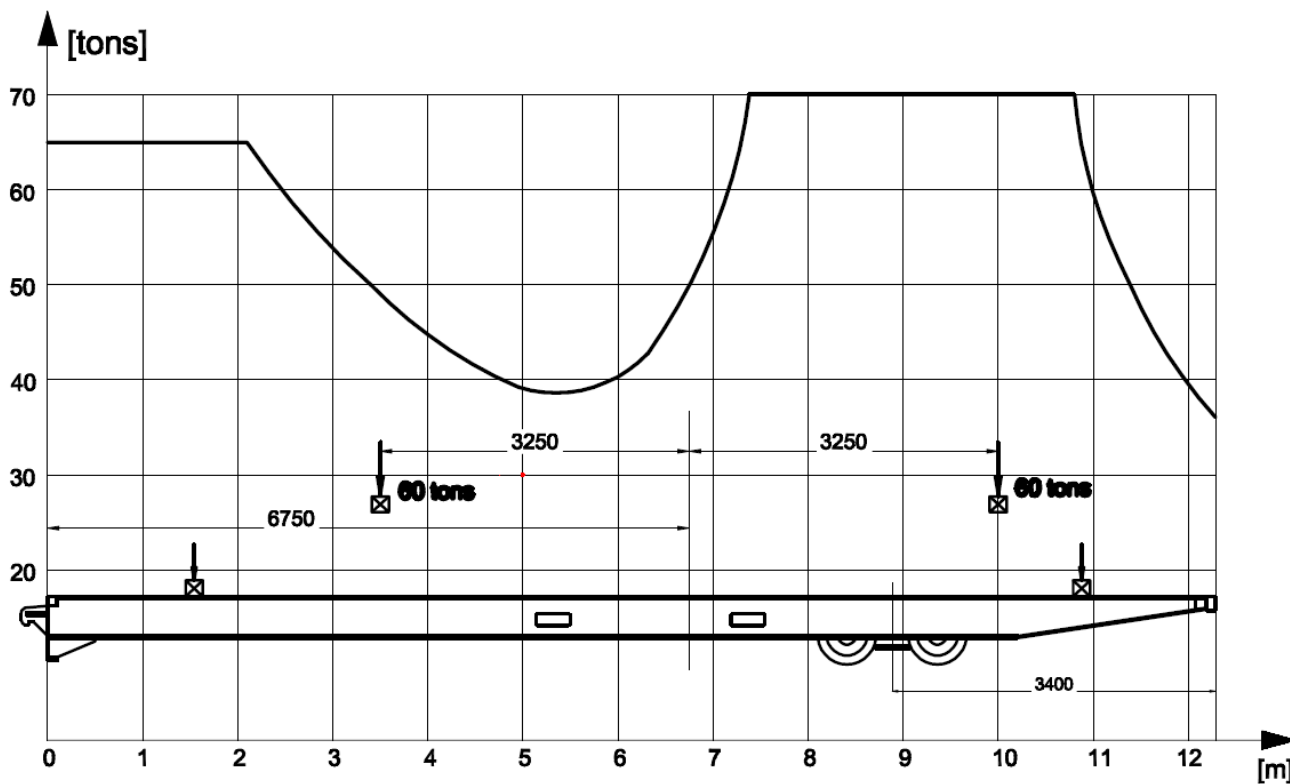
Distributed load



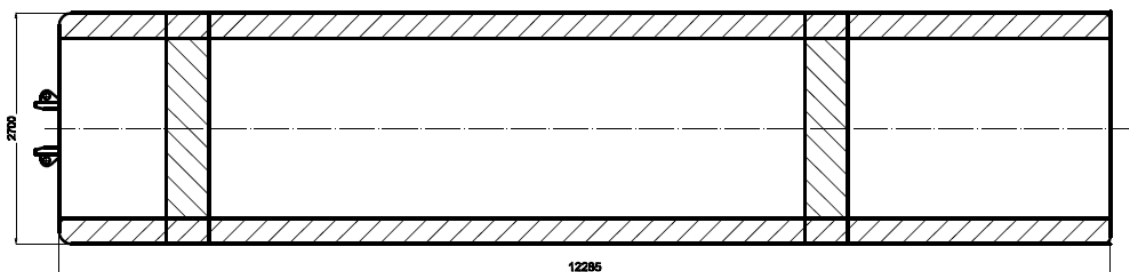
Load center of gravity must be within the areas, corresponding to the load



Point load

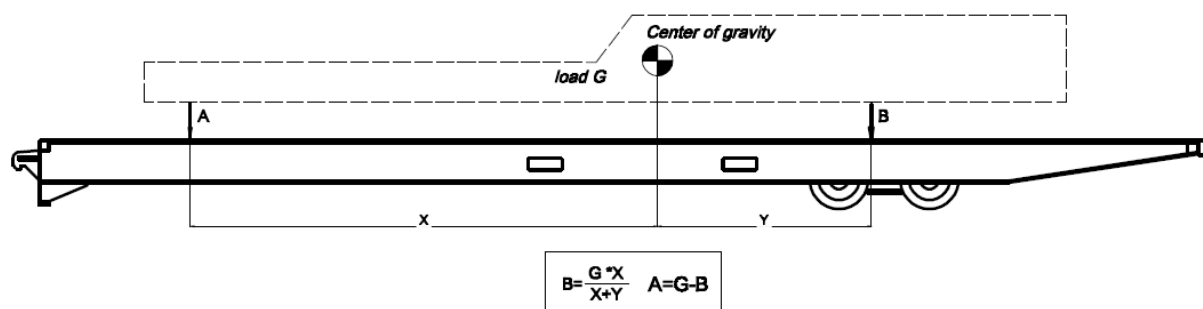


Point loads on the platform to be placed or transferred using transversal supports to the longitudinal beams



Loading instruction

- 1) Identify loads center of gravity
- 2) Calculate the loads, coming to the Rolltrailer platform acc to below scheme



- 3) Make sure, load center of gravity is in the determined area
- 4) Loads A and B shall not exceed the limit line in above diagram

4.3 Coupling the rolltrailer to the gooseneck

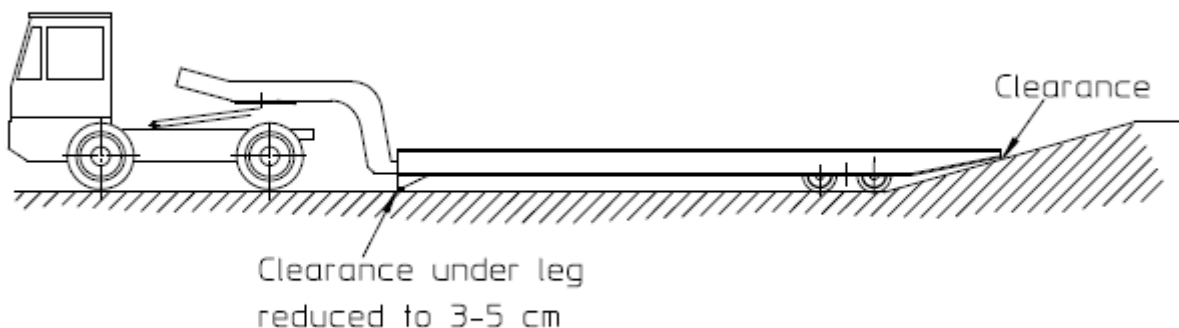
- Drive backwards with the towing vehicle and the gooseneck.
- Place the toe of the gooseneck exactly into the mouth of the rolltrailer.
- Lift the gooseneck with engaged reverse gear and unbraked towing vehicle
- Make sure that the gooseneck is hooked into the rolltrailer correctly and the safety chains are connected to the rolltrailer properly (if applicable).
- Lift the rolltrailer via the lifting hydraulics of the towing vehicle until the front wall of the rolltrailer is approximately 100 – 150 mm over the ground.

4.4 Driving the towing vehicle with rolltrailer

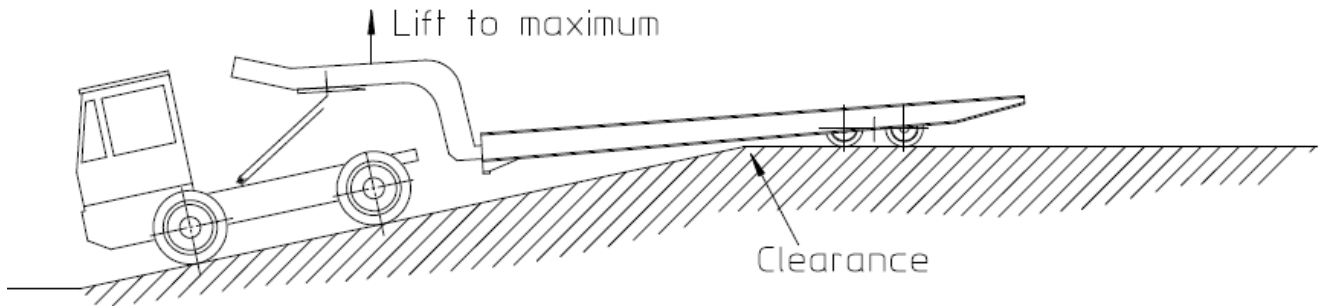
- The rolltrailer shall only be towed by an appropriate towing vehicle with a lifting capacity of at least 39 t and a lifting height of at least 750 mm in combination with an adequate gooseneck.
- The roads shall be even, horizontal and free from obstacles.
- The permitted speed and the current safety regulations shall in any case be complied with.
- The maximum speed under load is 6 km/h.
- In curves the speed has to be reduced.
- When reversing and the rear view is insufficient or obstructed, the driver has to be supported by another person, indicating the direction.

4.5 Driving over ramps

- When reversing towards an upgoing ramp as shown in below sketch, driver must lower the fifth wheel to maintain a ground clearance under the trailer front leg of 3-5 cm in order to achieve a maximum clearance rear.



- When the trailer wheels have passed the upper end of the ramp, driver must lift the fifth wheel to maximum height to achieve a sufficient ground clearance under longitudinal beams of the trailer (see sketch below).



5 MAINTENANCE INSTRUCTIONS

5.1 General information

The following tests and maintenance works have to be carried out at regular intervals to ensure that your rolltrailer is working reliably and securely. Defective parts have to be exchanged instantly. As spare parts you should use only OEM-quality components, which fulfil the specified requirements and correspond to the national safety regulations of your country.

5.2 First inspection

Wheel bearings have to be checked and if necessary readjusted after the first 10 - 20 operating hours.

How to readjust wheel bearings

- Make sure that the rolltrailer is in parking position.
- Lift the rear side of trailer so that the wheels can be rotated by hand.
- Put suitable supports under the lifted trailer.
- Check wheels: In case there is axial movement or the rotation is not smooth,
 - remove the hub cap (warm the cap up to app. 60°C).
 - remove the split pin from the horned nut.
 - tighten the horned nut until the wheel is blocked.
 - untighten the horned nut until the wheel rotates freely but so that there isn't any axial movement.
 - refit the split pin.
 - refit the hub cap (warm the cap up to app. 60°C).
- Make sure that you did not forget to refit any parts.
- Lower rear side of trailer.

5.3 Running gear

Carry out visual inspections of the running gears as per maintenance schedule:

- Check oscillation of the pendular axles and inspect pivot pins (bolts) and axle securing plates. Retighten (if necessary) axle guard screws.
- In case oscillation of axles is not smooth, demount pivot pin and check if there is insufficient grease or axle bushings are worn. Replace worn bushings.
- Check oscillation of the rocker beams and in case of not smooth movement, take actions as described above for the axles.
- Make visual inspection of axles and rocker beams. In case of cracks or damages report to the manufacturer and ask for repair instructions.

5.4 Tyres

Carry out visual inspections of the tyres as per maintenance schedule.

- Check rubber for cracks, damages or foreign material, sticking in the rubber.
- Check correct position of tyres on the rims.

In case of severe rubber damages or if the tyre sits incorrectly on the rim, replace tyre against a new one.

5.5 Wheels

Inspect wheels as per maintenance schedule:

1. Check how the wheel is rotating.
2. Check the sound. If the wheel is making any abnormal sounds, demount the wheel and check the roller bearing. Replace it if necessary.
3. Check the axial movement of the wheel. If you notice any axial movement readjust the roller bearings (see above "How to readjust wheel bearings")

In case of heavy or frequently use, please shorten the interval of inspection.

5.6 Frame

Carry out visual inspections of the frame and the welding joints as per maintenance schedule. The frame is made of structural steel. In case of damage it can be repaired by qualified staff. For questions, please contact the manufacturer.

5.7 Bolts (pivot pins) for axles and rocker beams

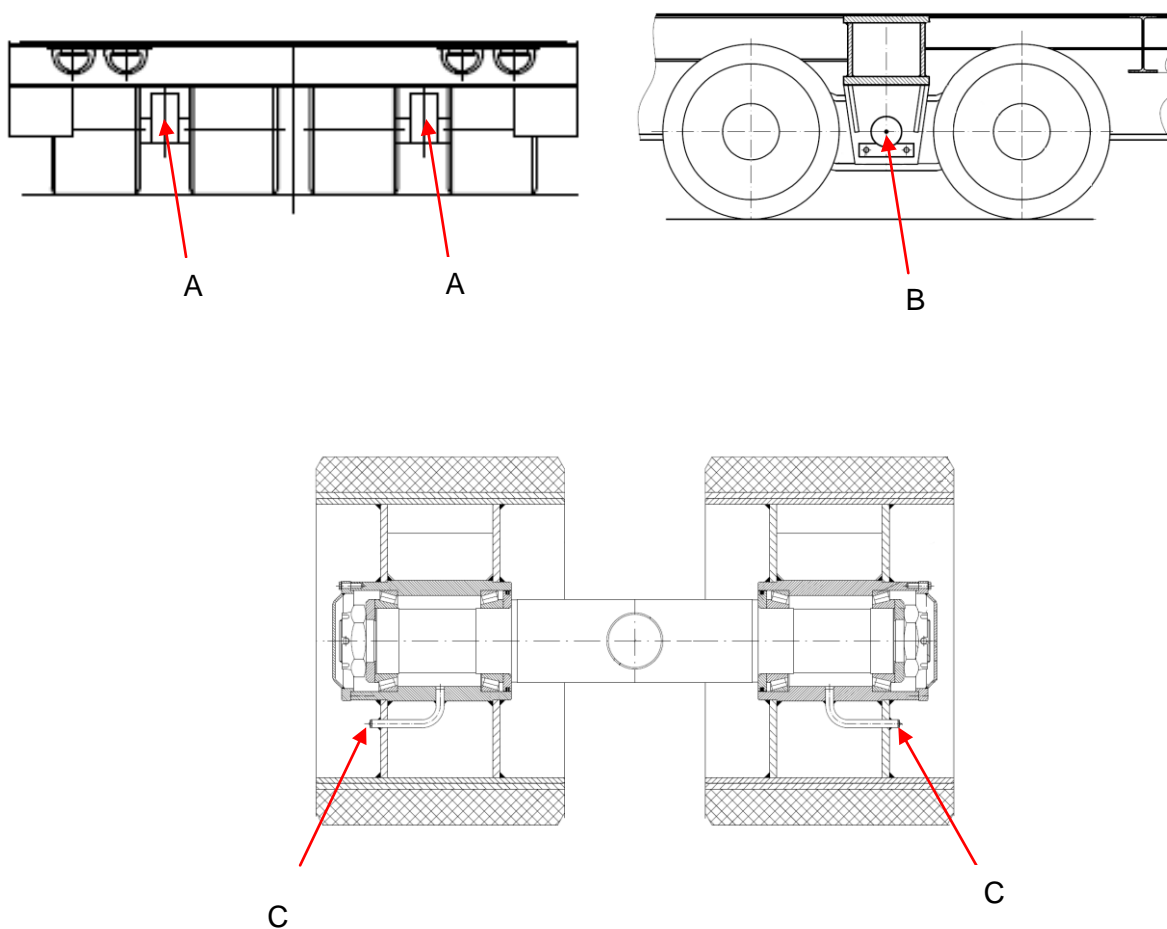
Inspect the bolts on the axles and rocker beams frequently. Check the securing (locking) plates for damages and adequate tightness.

5.8 Lubrication schedule

Greasing point		Number	Greasing interval
A	Axle bearings	4	1 month
B	Rocker beam	2	1 month
C	Wheel bearings	8	6 months

N.B.: The intervals at which greasing is necessary depend on the operating conditions of the rolltrailer. In case of heavy use, please shorten the greasing intervals.

Lubricant: Standard multi purpose grease
Viscosity class NLGI 2.



5.9 Maintenance schedule

Scope of work	Weekly	Monthly	Every 6 months	Yearly
Visual inspection	X			
Running gear			X	
Tyres		X		
Wheels			X	
Frame				X
Bolts		X		

5.10 Tightening torque for screws and nuts

All screws and nuts have to be checked and tightened respectively **once a month**.

Friction value: $\mu_{\text{tot.}} = 0,12$ for screws and nuts without after-treatment as well as phosphated screws.
If not otherwise indicated the tightening torque can be taken from the following table:

Metric standard threads (ISO) DIN 13, sheet 13

Dimension	8.8		10.9		12.9
M4	2,8		4,1		4,8
M5	5,5		8,1		9,5
M6	9,5		14		16,5
M7	15		23		28
M8	23		34		40
M10	46		68		79
M12	79		115		135
M14	125		185		215
M16	195		280		330
M18	280		390		460
M20	390		560		650
M22	530		750		880
M24	670		960		1100
M27	1000		1400		1650
M30	1350		1900		2250
M33	1850		2600		3000
M36	2350		3300		3900
M39	3000		4300		5100

Maintenance Records

Serial number: _____

Date of commissioning: _____

Date of first inspection: _____

Carried out by: _____

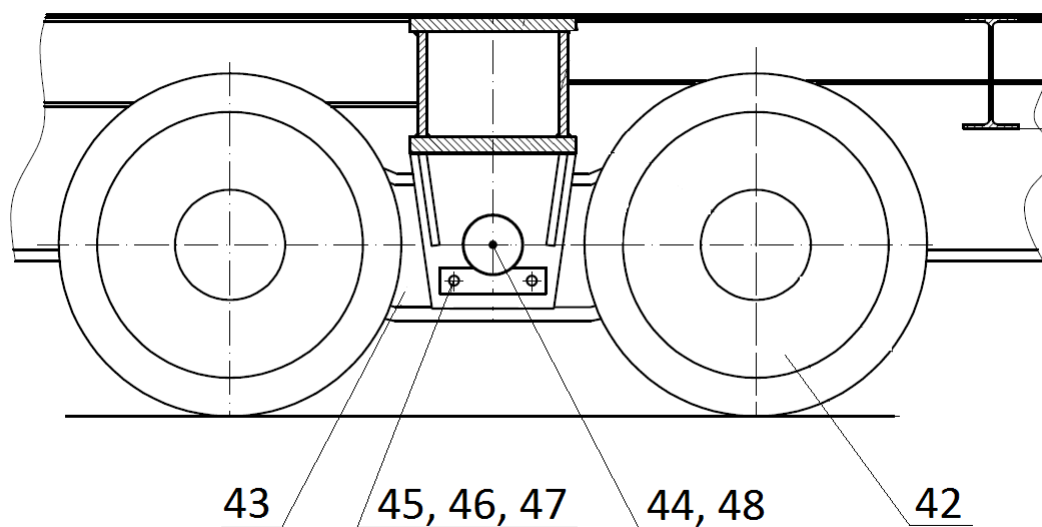
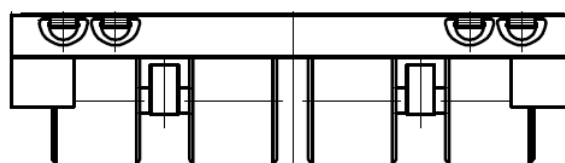
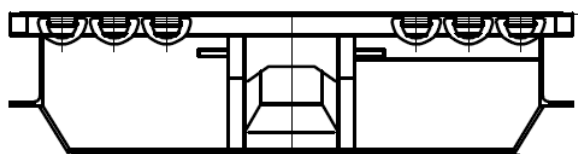
Periodic inspections / maintenance works

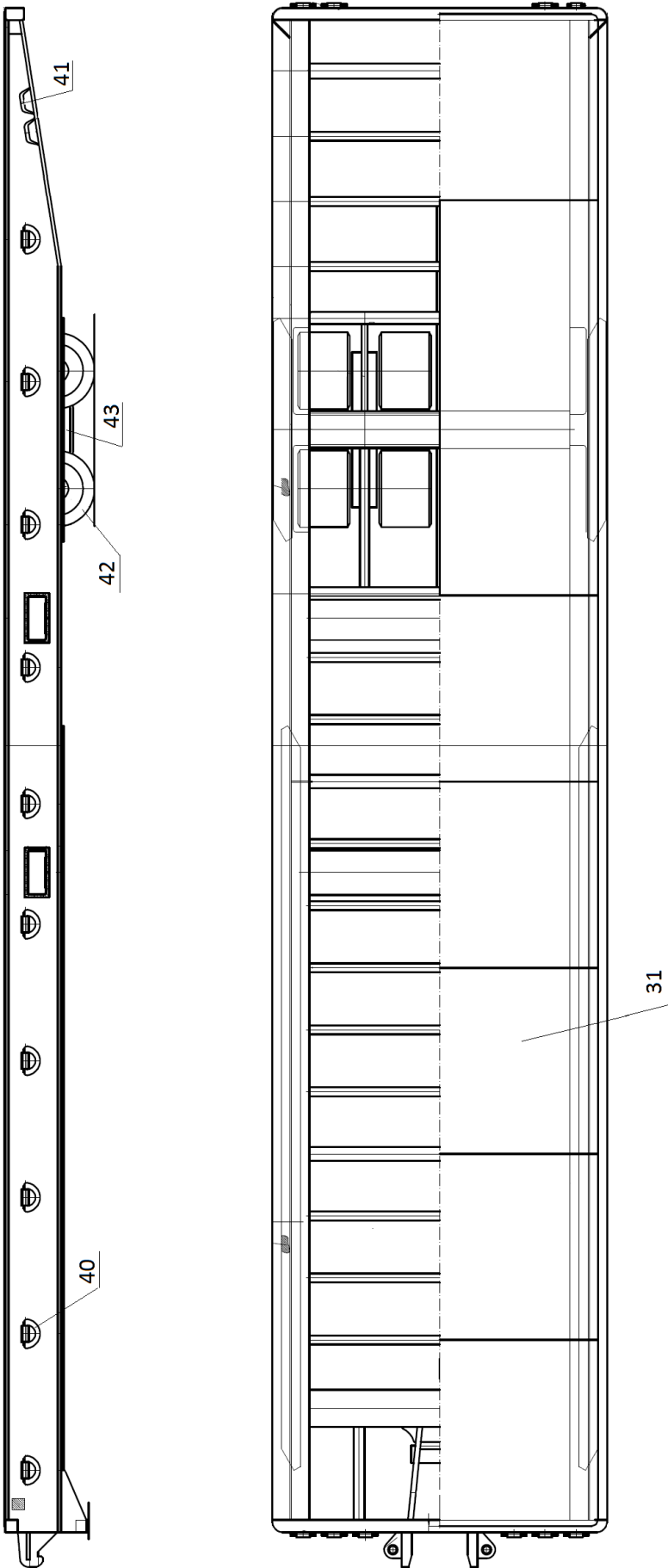
Date	Result	Defects remedied on by		Signature

6 SPARE PARTS

6.1 GENERAL VIEW

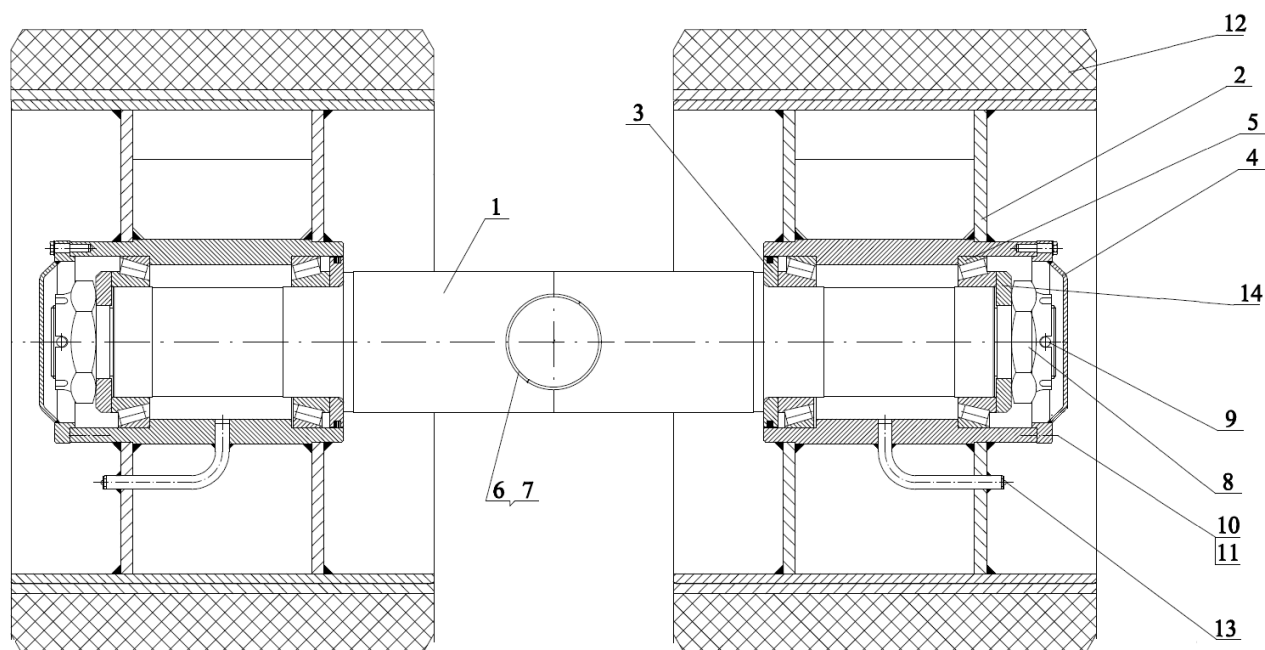
Number of spare part list		80288
Item	Description	Part no
31	Platform cover, tear plate 5/7 mm	80288-31
40	D-ring	80288-40
41	Lashing	80288-41
42	Wheel set 620x420x1078	80288-42 →6.2
43	Rocker beam L=950	80288-43 →6.3
44	Bolt for rocker beam	80282-44
45	Securing plate for bolt	80288-45
46	Hexagonal screw M20x50 DIN933	80288-46
47	Lock washer A20,5 DIN127B	80288-47
48	Lubrication nipple AM10x1 DIN71412	80288-48





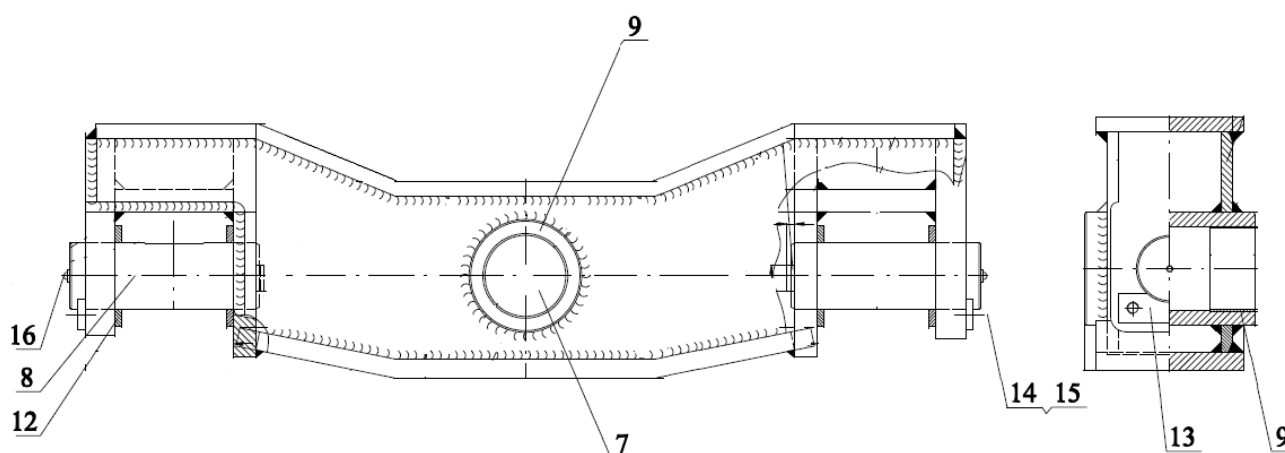
6.2 WHEEL SET 620X420X1078

Dwg. No.		80288-42
Item	Description	Part. No / Type
1	Axle	80288-42-1
2	Wheel body	80288-42-2
3.1	Washer d=169/110,2	80288-42-3.1
3.2	Fey ring FK6 ASD 170	1450.0204
4	Hub cap	80288-42-4
5	Taper roller bearing 32022	1410.0009
6	Bushing 95x90-40	1406.0008
7	Distance tube	80288-42-7
8	Castle nut M72x2	80288-42-8
9	Split pin 10x112 DIN94	80288-42-9
10	Screw M8x35 DIN933	80288-42-10
11	Lock washer A8,5 DIN127B	80288-42-11
12	Tyre 620/420-480	1605.1023
13	Lubrication nipple AM10x1 DIN71412	80288-42-13
14	Washer d=140/72,5	80288-42-14



6.3 ROCKER BEAM

Dwg. No.		80288-43
Item	Description	Part. No
7	Bolt for rocker beam d=110	80288-43-7
8	Bolt for wheel set d=90	80288-43-8
9	Bushing 115x110x60	1406.0017
12	Washer d=135/91-10	80288-43-12
13	Axle securing plate 40x10 DIN15058	80288-43-13
14	Hexagonal screw M16x50 kl 8.8 DIN933	80288-43-14
15	Lock washer A16,5 DIN127B	80288-43-15
16	Lubrication nipple AM10x1 DIN71412	80288-43-16



7 LASHING EQUIPMENT

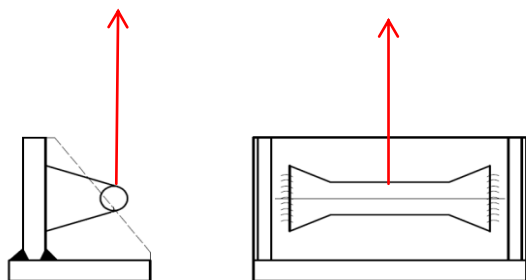
MBL: Minimum Braking Load

In case of deformation : The lashing, D-Ring or lashing rail has to be replaced!

Lashing

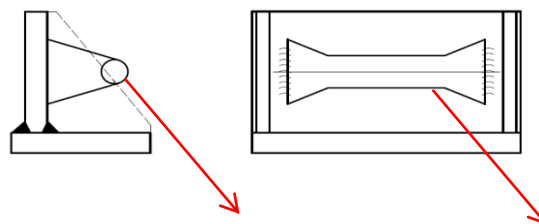
MBL = 280 kN

Pulling straight up



MBL = 300 kN

Pulling down at an angle



D-Ring

MBL	=	500 kN
Proof load	=	313 kN
SWL	=	250 kN

