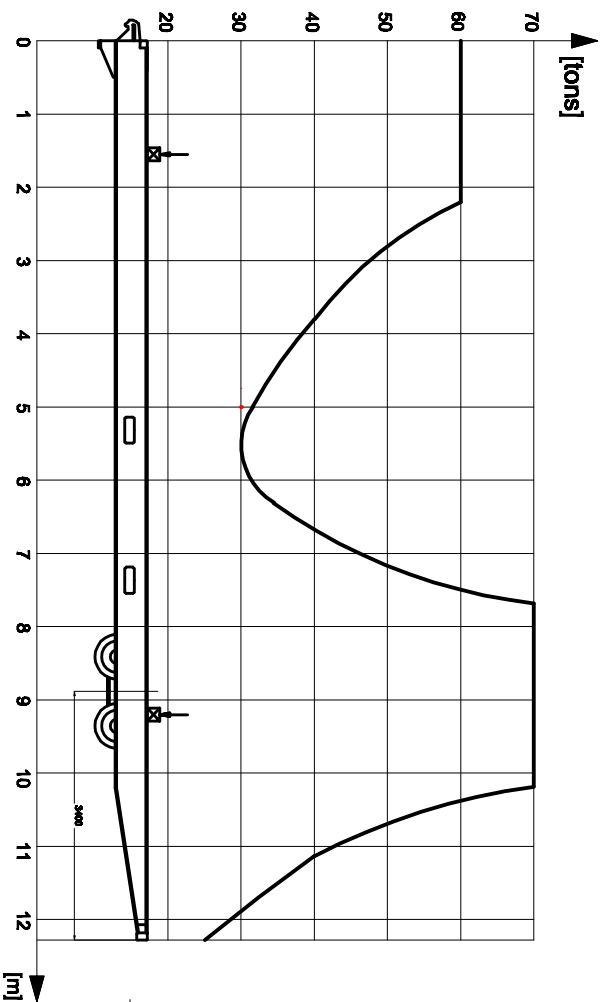
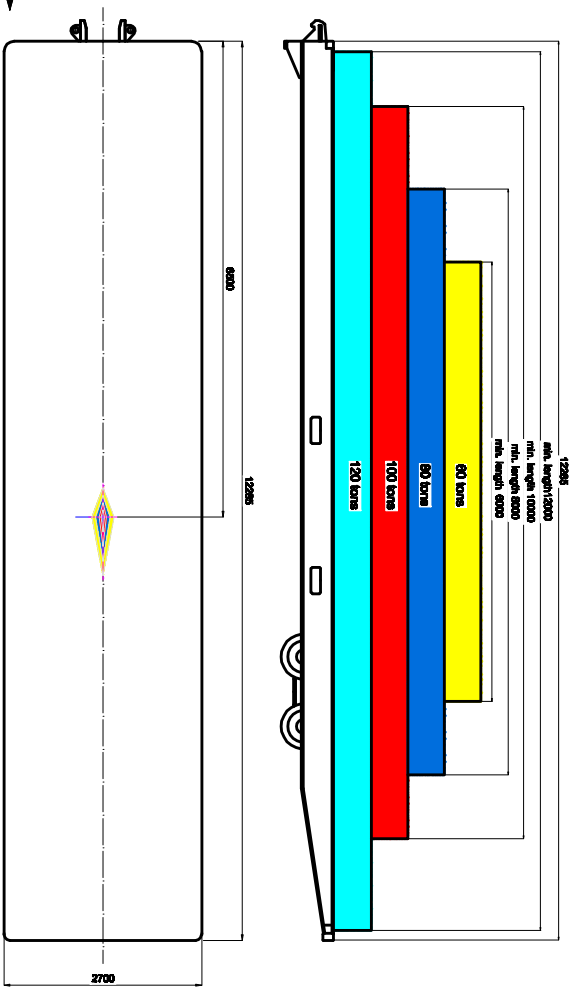


A 80280 GRIMALDI Rolltrailer 40 feet, 120 tons, 2,7m wide

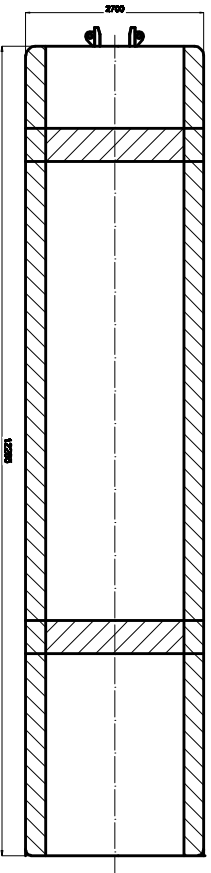
Point load



Distributed load

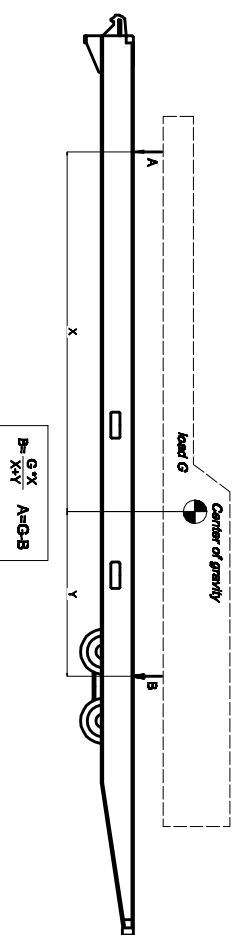


Point loads on the platform to be placed or transferred using transversal supports to the longitudinal beams

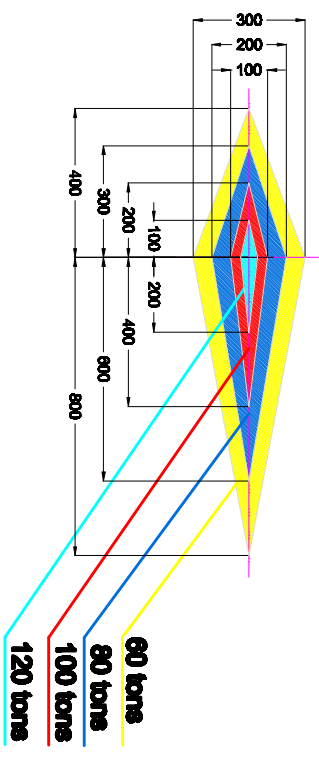


Loading instruction

- 1) Identify loads center of gravity
- 2) Calculate the loads, coming to the Rolltrailer platform acc to below scheme



Load center of gravity must be within the areas, corresponding to the load



- 3) Make sure, load center of gravity is in the determined area
- 4) Loads A and B shall not exceed the limit line in above diagram